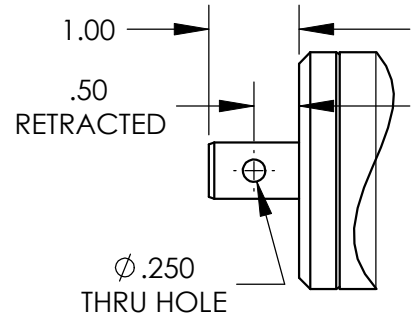
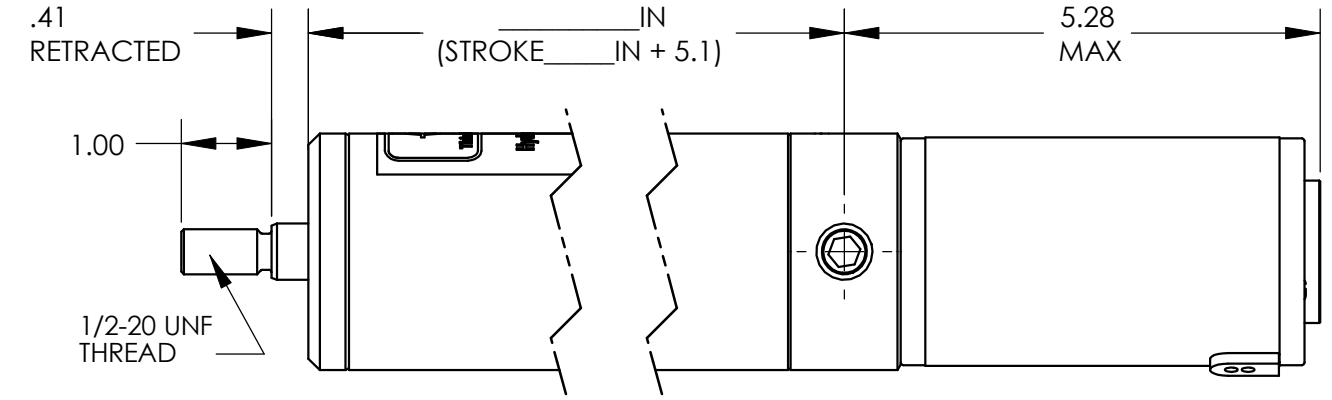
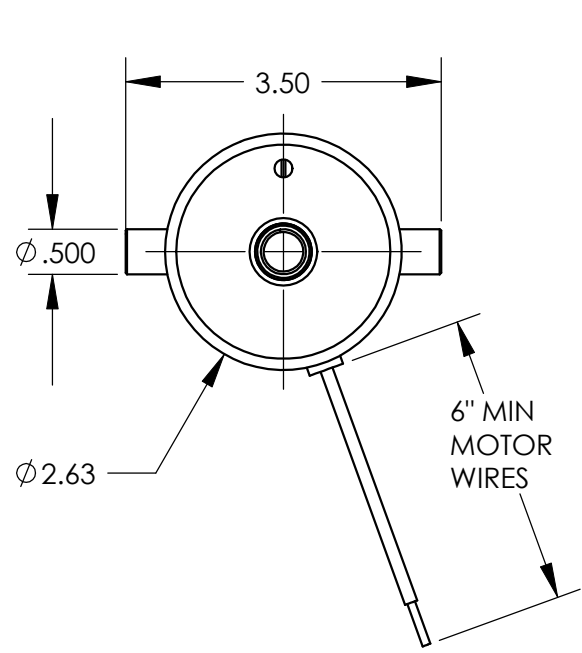


The subject matter shown and described in this drawing and any other information advanced in connection therewith is to be held in strict confidence. All rights to any designs, inventions, trademarks, and copyrights disclosed are reserved to Dreison International Inc.

HydraMotion
 4540 West 160th Street
 Cleveland, Ohio 44135
hydramotion.net
 sales@hydramotion.net
 216-362-7725 fax 216-362-0799



PLEASE FILL OUT THESE FIELDS
 -STROKE: _____ IN
 -REQUIRED EXTENSION FORCE: _____ LBS
 -REQUIRED RETRACTION FORCE: _____ LBS
 -ACTUATIONS PER HOUR: _____
 -MOTOR: [] 12VDC ; [] 24VDC ; [] 120VAC
 -ROD END: [] 1/2-20X1.00 THREAD ; [] 1/4IN THRU HOLE

CROSS HOLE CONFIGURATION

APPROVAL SIGNATURES:
 COMPANY NAME: _____
 CUSTOMER SIGNATURE: _____
 ACTUATOR SALES SIGNATURE: _____

THIRD ANGLE PROJECTION	INTERPRET IN ACCORDANCE WITH ANSI Y14.5M-1982
STD TOLERANCES (UNLESS OTHERWISE NOTED) Fractional $\pm 1/32$ Decimal $.XX \pm 0.030$ Angular $\pm 1^\circ$.XXX ± 0.010 WHOLE NUMBERS & 1 PLACE DECIMALS ARE REFERENCE DIMENSIONS ONLY	
DIMENSIONS IN INCHES [mm]	DO NOT SCALE
PROJ- REF -	Author - JM Checked -



TITLE ACTUATOR DRAWING CUSTOMER OUTLINE/BUILD SHEET			
SIZE A	FSCM NO. ODBY7	DWG. NO. ACTUATOR DRAWING	REV
APPROVED	SCALE NONE	SHEET SHEET 1 OF 2	

REV	DATE	DESCRIPTION	ZONE	ECN